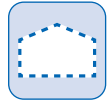
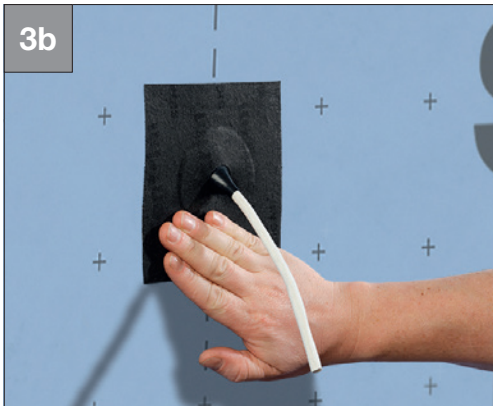


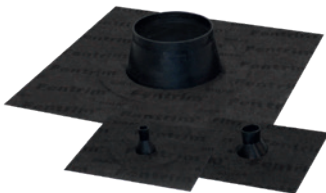
## Wall: Timber construction *Windtight and rainproof on the outside*



### Circular penetration



- Seal the penetration using Fentrim sleeve black
- Follow the application steps in accordance with P. 83



**Fentrim**® grommet black

P. 141

### For open facades



#### How it should look:

- Penetration of open facade sealed in a windtight manner using Wigluv black 20/40
- Suitable for facades with joint openings of  $\leq 50$  mm and a maximum area of 40%.



**Wigluv**® black 20/40

P. 131