



Wall: Timber construction *Windtight and rainproof on the outside*

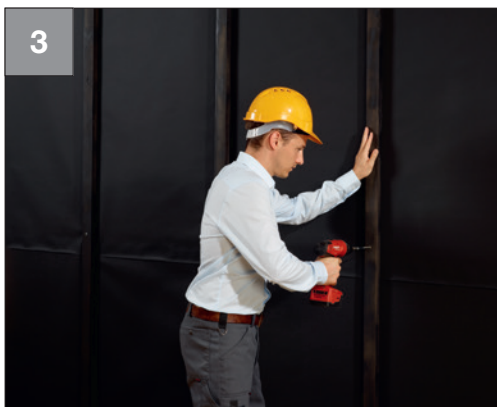
Mounting facade membrane for open facades – using SOB



- Apply Majvest 700 SOB with the smooth side facing you
- Secure the membrane above the adhesive joint using a stapler

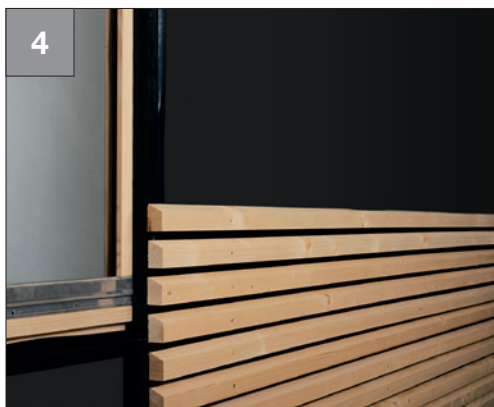


- Lay the second membrane
- Overlap membranes by 10 cm
- Remove the two backing strips and press the bond firmly down



After sealing:

- For final attachment of the membrane mount counter slatting in **structure direction directly on the bearing structure**



How it should look:

- Majvest 700 SOB and Wigluv black behind permanently open facade
- Suitable for facades with joint holes of ≤ 50 mm and a surface proportion of max. 40%

Wall: Timber construction
Windtight and rainproof on the outside



Majvest[®] 700 SOB

P. 132



Wigluv[®] black

P. 131