



Roof *Airtight on the inside*

Circular penetration



- Crease Rissan lengthwise



- Apply Rissan half to the pipe and half to the vapour control layer without tension



How it should look:

- The circular penetration is airtightly sealed with layers of Rissan 60



Rissan® 60

P. 120



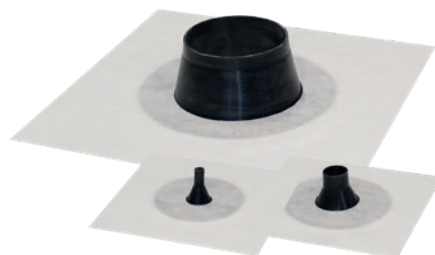
Alternatively



- Slide the sleeve over the pipe
- Press the grommet with your thumb up to the stop
- Remove the slitted backing strip from the centre out



- Smooth out the substrate to remove any wrinkles and press to apply
- Outdoor sealing procedure for Fentrim sleeve black



Fentrim® grommet white

P. 140