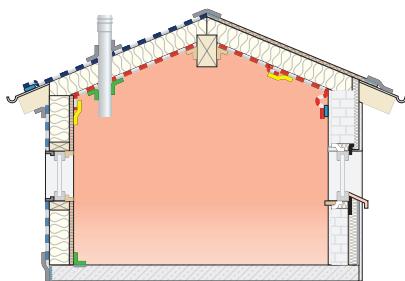


SIGA substrate matrix

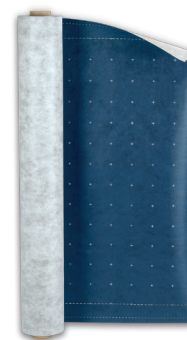


Suitable substrates	Twinet®	Rissan® 60	Rissan® 100 & 150	Sicrall® 60 & 170	Corvum® 30/30 & 12/48	Primur® cartridge/tubular bag	Primur® roll	Wigluv® black	Wigluv® 60 & 20/40	Wigluv® 100 & 150	Fentrim® 20 & Fentrim® IS20	Fentrim® 2 & Fentrim® IS2	Fentrim® 20 50/85	Fentrim® 2 50/85
Wood	✓	✓	✓	✓	✓	✓	✓	✓	✓	✓	✓	✓	✓	✓
Hard wood-based panels	✓	✓	✓	✓	✓	✓	✓	✓	✓	✓	✓	✓	✓	✓
Softboards										✓*		✓*		✓*
Gypsum plaster boards / gypsum fibre boards		✓	✓	✓	✓	✓	✓	✓	✓	✓	✓	✓	✓	✓
Cement fibre boards								✓	✓	✓	✓	✓	✓	✓
Concrete, masonry, plaster			✓*			✓	✓	✓*	✓*	✓	✓	✓	✓	✓
Bituminous sheeting, EPDM in the base area		✓	✓				✓			✓	✓	✓	✓	✓
Rigid insulation (EPS/XPS/PU)			✓							✓	✓	✓	✓	✓
Metal	✓	✓	✓	✓	✓		✓	✓	✓	✓	✓	✓	✓	✓
Hard plastics	✓	✓	✓	✓	✓		✓	✓	✓	✓	✓	✓	✓	✓

*must be reinforced with high-performance primer SIGA-Dockskin.

If necessary, strengthen all above mentioned substrates with high performance primer SIGA-Dockskin.

Note: For the correct choice of product for the intended application, the substrate matrix, the application recommendations and product information in this manual must be considered.



Suitable membranes	Twinet®	Rissan® 60	Rissan® 100 & 150	Sicrall® 60 & 170	Corvum® 30/30 & 12/48	Primur® cartridge / tubular bag	Primur® roll	Wigluv® black	Wigluv® 60 & 20/40	Wigluv® 100 & 150	Fentrim® 20 & Fentrim® IS20	Fentrim® 2 & Fentrim® IS2	Fentrim® 20 50/85	Fentrim® 2 50/85
Vapour control layers/ diffusion retarder membranes														
<ul style="list-style-type: none"> • Smooth to slightly rough PE/PA/PO/PP membranes • Kraft papers • Aluminium sheeting 	✓	✓	✓	✓	✓	✓	✓				✓		✓	
Vapour control layers/ diffusion retarder membranes for above-rafter insulation and roof renovations														
<ul style="list-style-type: none"> • Smooth to slightly rough PE/PA/PO/PP membranes 	✓					✓	✓		✓	✓				
Breathable membranes/roof underlay membranes and roof membranes (does not apply to bitumen and PVC membranes)							✓		✓	✓				
Facade membranes for closed facades							✓		✓	✓			✓	✓
Facade membranes for open facades							✓	✓						

Note: For the correct choice of product for the intended application, the substrate matrix, the application recommendations and product information in this manual must be considered.