



## Roof *Airtight on the inside*

### Mounting vapour control layer for roof renovation from the outside



- Fit a sheet of insulating material with a solid structure between the rafters (protects vapour control layer against sharp, protruding objects)
- Seal vapour control layer at the lowest part of the rafters using Twinet 20



- **Apply Majrex 200** with the unprinted side facing towards you
- Overlap membranes by approx. 10 cm, fix in place with Twinet 20 and additionally with a stapler if required
- See photo 2a for mounting of Majpell 5

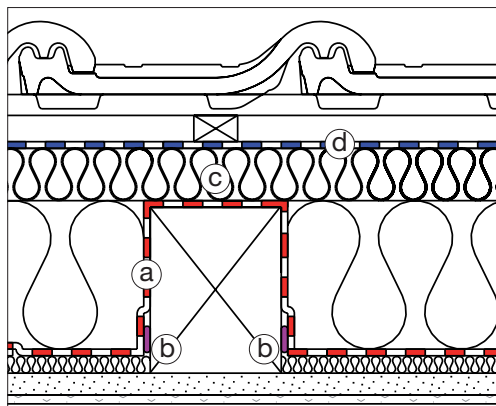


- Seal overlaps and penetrations airtightly using Wigluv 60
- Not suitable for makeshift coverage/ construction coverage



- Fill insulation material in compartments in a tight fit

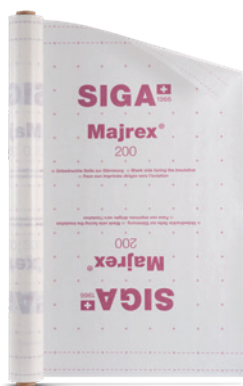
## Roof Airtight on the inside



Roof renovation from the outside with Majpell 5:

- Lay **Majpell 5** with the smooth side and the writing facing you

- Seal vapour control layer (a) airtight at the bottom of the rafters with **Twinet 20** (b)
- Thermal insulation layer (c) above the rafters  $R \geq 1.1$
- For locations > 800 above sea level plan with a building physicist
- Optional (d) Majcoat 150 & Majcoat 150 SOB / Majcoat 200 SOB / Majcoat 250 SOB / Majcoat 350



**Majrex® 200**

P. 115

**Majpell® 5**

P. 116

**Twinet® 20**

P. 126