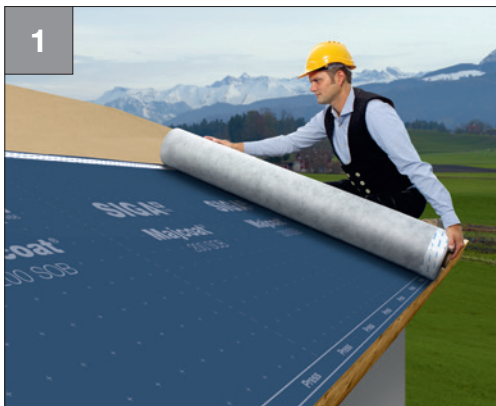




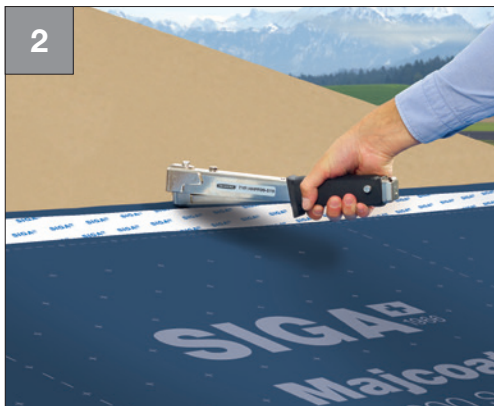
Roof

Windtight and rainproof on the outside

Installation of underlay and roof membranes - with SOB



- Apply the membrane with the lettering facing you



- Fix the membrane above the adhesive joint using a stapler



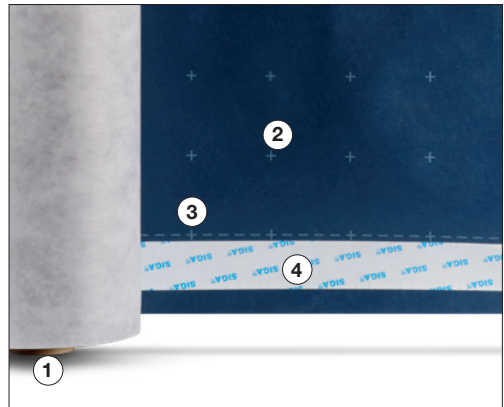
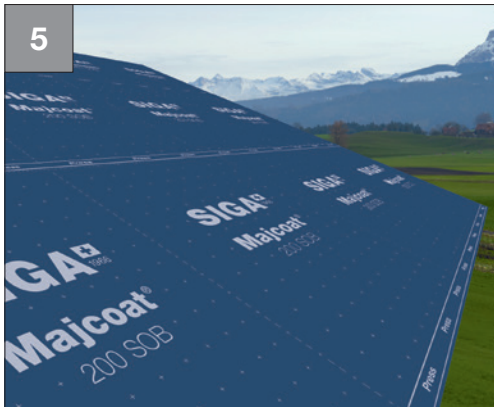
- Lay the second membrane
- Overlap the membranes by approx. 10 cm
- Remove both backing strips



- Press the bond firmly down in the application area
- Install battens



Windtight and rainproof on the outside



How it should look:

See **Tips and tricks for installation**
P. 100-102

- **Protruding roll core (1)** protects Majcoat SOB up to the very last metre
- **Cutting aid (2) bonding aid (3) and twin-adhesive zone with adhesive applied on both sides (4)** save time



Majcoat® 200 SOB

P. 134



Majcoat® 150 SOB

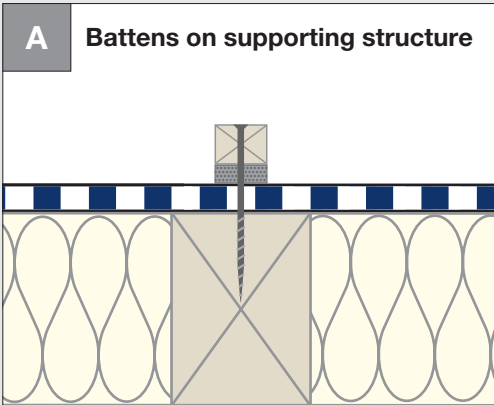
P. 135



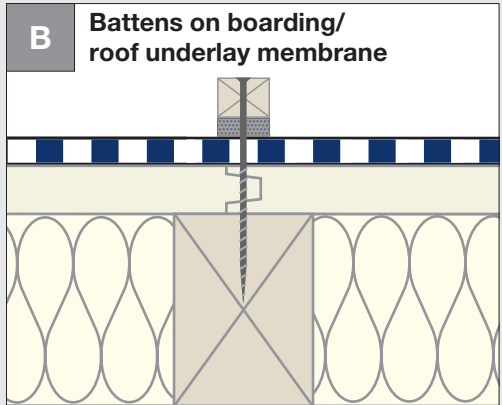
Roof

Windtight and rainproof on the outside

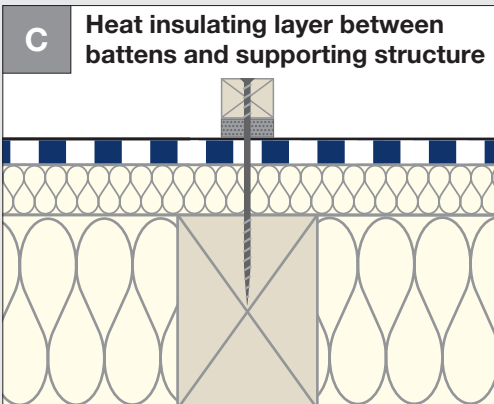
Tips and tricks



- Mount counter battens in the direction of the supporting structure - directly on the supporting structure, e.g. rafters
- **Important:** counter battens must rest on the underlay with their complete surface



- Mount counter battens directly on boarding or underlays which have been laid flush



- Mount using suitable screws (e.g. full thread)
- Sufficient pressure resistance of heat insulation
- Wood-based softboards must be declared as under-roof /underlay boards
- Water carrying layer must be the same height at all points



- The use of nail sealing tape is recommended for effecting weather protection