



## Roof *Airtight on the inside*

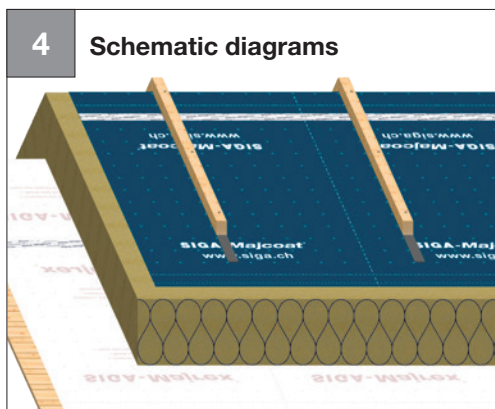
### Mounting vapour control layer for above-rafter insulation



- Apply Majrex 200 with the unprinted side facing towards you
- Overlap membranes by approx. 10 cm, fix in place with Twinet 20 and additionally with a stapler if required

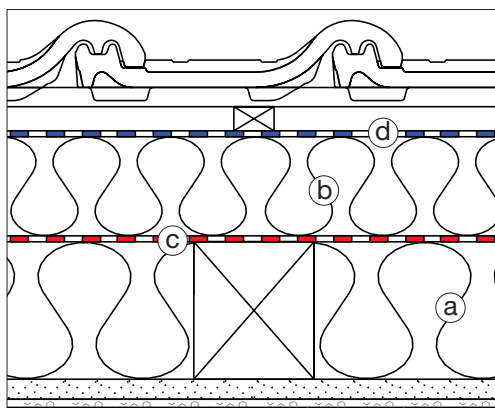


- Seal overlaps and penetrations airtightly using Wigluv 60
- **Not suitable for makeshift coverage / construction coverage**



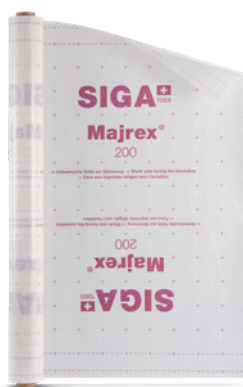
### How it should look:

- Majrex 200 for above-rafter insulation



Above-rafter insulation with Majpell 5:  
• **Lay Majpell 5** with the smooth side and the writing facing you

- (a) Thermal insulation between joists
- (b) Covering insulation  $\geq$  thermal insulation between joists
- (c) Majrex 200 / Majpell 5
- (d) Optional Majcoat 150 & Majcoat 150 SOB / Majcoat 200 SOB / Majcoat 250 SOB / Majcoat 350



**Majrex® 200**

P. 115

**Majpell® 5**

P. 116

**Wiglulv® 60**

P. 128