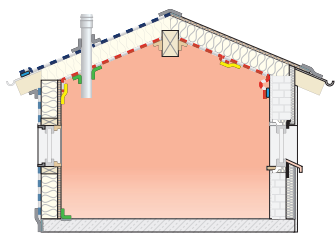


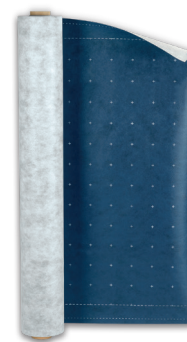
SIGA substrate matrix



Suitable substrates	Twinet®	Rissan® 60	Rissan® 100 & 150	Sicrall® 60 & 170	Corvum® 30/30 & 12/48	Primur® cartridge/tubular bag	Primur® roll	Wigluv® black	Wigluv® 60 & 20/40	Wigluv® 100 & 150	Fentrim® 20 & Fentrim® IS20	Fentrim® 330 grey	Fentrim® 2 & Fentrim® IS2	Fentrim® 20 50/85	Fentrim® 2 50/85	Meltell®
Wood	✓	✓	✓	✓	✓	✓	✓	✓	✓	✓	✓	✓	✓	✓	✓	✓
Hard wood-based panels	✓	✓	✓	✓	✓	✓	✓	✓	✓	✓	✓	✓	✓	✓	✓	✓
Softboards										✓*			✓*		✓*	
Gypsum plaster boards / gypsum fibre boards		✓	✓	✓	✓	✓	✓	✓	✓	✓	✓	✓	✓	✓	✓	✓
Cement fibre boards						✓	✓	✓	✓	✓	✓	✓	✓	✓	✓	✓
Concrete, masonry, plaster			✓*			✓	✓	✓*	✓*	✓*	✓	✓	✓	✓	✓	✓
Bituminous sheeting, EPDM in the base area			✓			✓	✓	✓	✓	✓	✓	✓	✓	✓	✓	✓
Rigid insulation (EPS/XPS/PU)			✓							✓	✓	✓	✓	✓	✓	✓
Metal	✓	✓	✓	✓	✓	✓	✓	✓	✓	✓	✓	✓	✓	✓	✓	✓
Hard plastics	✓	✓	✓	✓	✓	✓	✓	✓	✓	✓	✓	✓	✓	✓	✓	✓

*must be reinforced with high-performance primer Dockskin.
If necessary, strengthen all above mentioned substrates with high performance primer Dockskin.

Note: For the correct choice of product for the intended application, the substrate matrix, the application recommendations and product information in this manual must be considered.



Suitable membranes	Twinet®	Rissan® 60	Rissan® 100 & 150	Sicrall® 60 & 170	Corvum® 30/30 & 12/48	Primur® cartridge / tubular bag	Primur® roll	Wigluv® black	Wigluv® 60 & 20/40	Wigluv® 100 & 150	Fentrim® 20 & Fentrim® IS20	Fentrim® 330 grey	Fentrim® 2 & Fentrim® IS2	Fentrim® 20 50/85	Fentrim® 2 50/85	Meltell®
Vapour control layers / diffusion retarder membranes • Smooth to slightly rough PE/PA/PO/PP membranes • Kraft papers • Aluminium sheeting	✓	✓	✓	✓	✓	✓	✓				✓	✓		✓	✓	✓
Vapour control layers / diffusion retarder membranes for above-rafter insulation and roof renovations • Smooth to slightly rough PE/PA/PO/PP membranes • Aluminium sheeting	✓					✓	✓		✓	✓						
Breathable membranes / roof underlay membranes and roof membranes (does not apply to bitumen and PVC membranes)	✓*						✓	✓	✓	✓						
Facade membranes for closed facades	✓						✓		✓	✓			✓		✓	
Facade membranes for open facades	✓						✓	✓								

Note: For use other than the installation aid, for the correct choice of product for the intended application, the substrate matrix, the application recommendations and product information in this manual must be considered.