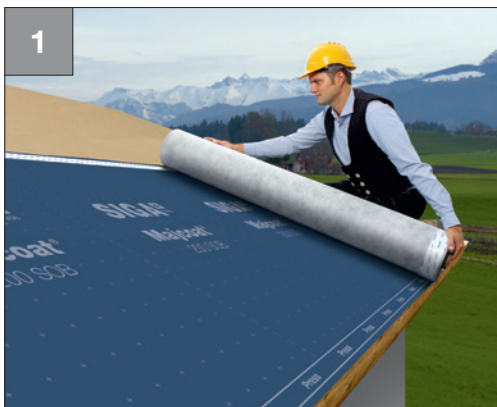




## Roof

### *Windtight and rainproof on the outside*

#### Installation of underlay and roof membranes - with SOB



- Apply the membrane with the lettering facing you



- Fix the membrane above the adhesive joint using a stapler



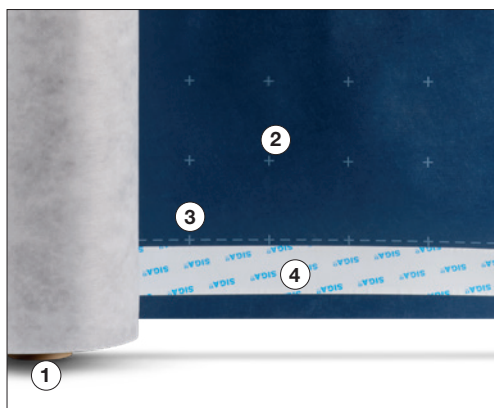
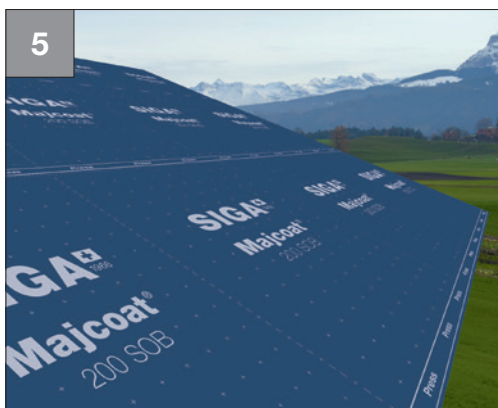
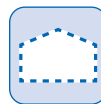
- Lay the second membrane
- Overlap the membranes by approx. 10 cm
- Remove both backing strips



- Press the bond firmly down in the application area
- Install battens

# Roof

## Windtight and rainproof on the outside



How it should look:

See **Tips and tricks for installation**  
P. 102-104

- **Protruding roll core (1)** protects Majcoat SOB up to the very last metre
- **Cutting aid (2) bonding aid (3) and twin-adhesive zone with adhesive applied on both sides (4)** save time



**Majcoat® 200 SOB**

P. 134



**Majcoat® 150 SOB**

P. 135

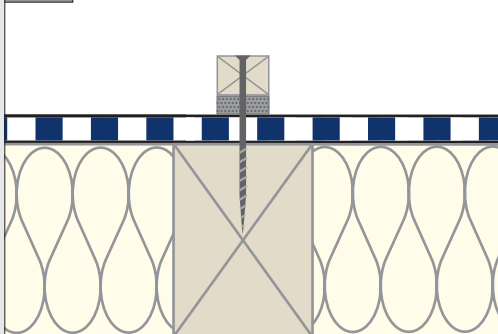


## Roof

# Windtight and rainproof on the outside

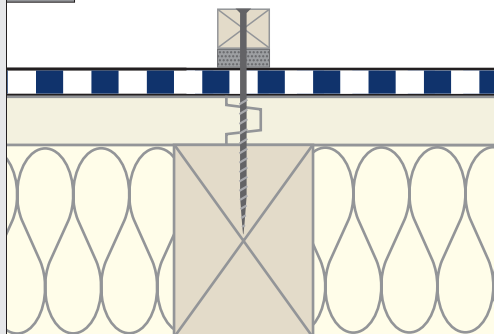
### Tips and tricks

#### A Battens on supporting structure



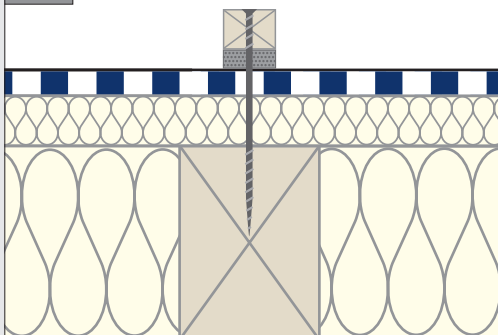
- Mount counter battens in the direction of the supporting structure - directly on the supporting structure, e.g. rafters
- **Important:** counter battens must rest on the underlay with their complete surface

#### B Battens on boarding/ roof underlay membrane



- Mount counter battens directly on boarding or underlays which have been laid flush

#### C Heat insulating layer between battens and supporting structure



- Mount using suitable screws (e.g. full thread)
- Sufficient pressure resistance of heat insulation
- Wood-based softboards must be declared as under-roof /underlay boards
- Water carrying layer must be the same height at all points



- The use of nail sealing tape is recommended for effecting weather protection